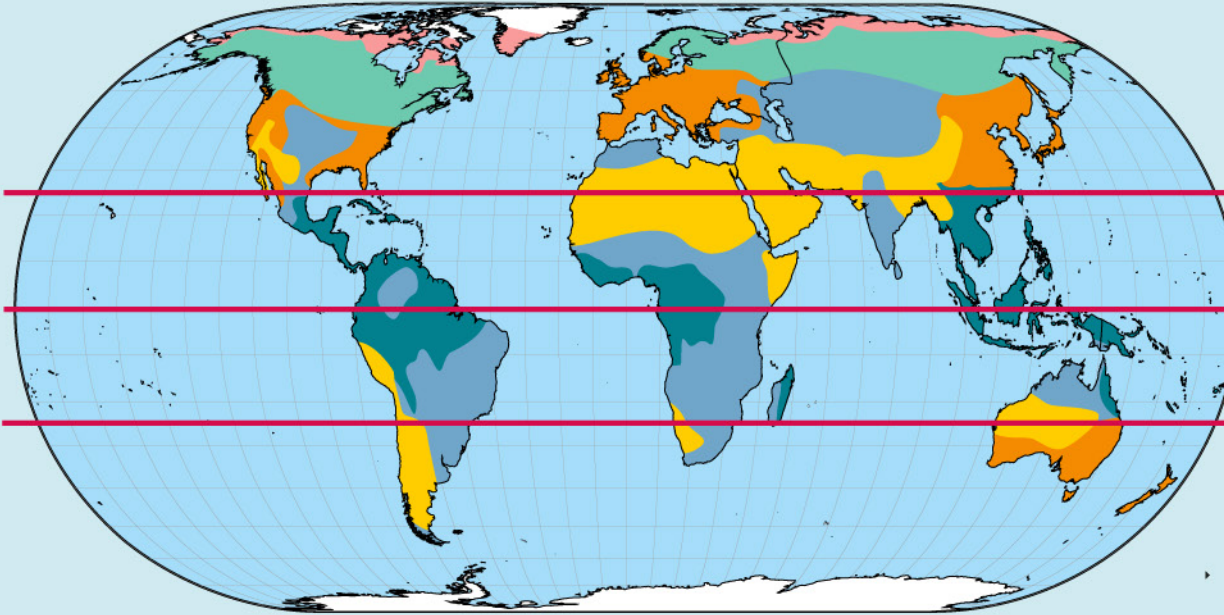


## Map of the world's biomes

### biome

An area of the world with a similar climate and landscape, where similar plants and animals live.

-  Tundra
-  Boreal forest
-  Temperate deciduous forest
-  Savannah
-  Tropical rainforest
-  Desert



### Tropic of Cancer

A line of latitude north of the Equator which marks the northernmost edge of the Earth's hottest regions.

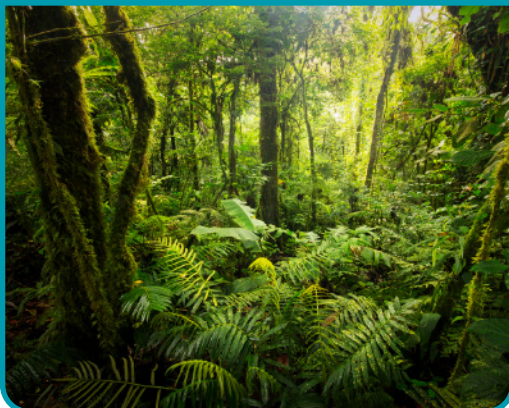
### Equator

An invisible horizontal line that splits the world into two hemispheres.

### Tropic of Capricorn

A line of latitude south of the Equator which marks the southernmost edge of the Earth's hottest regions.

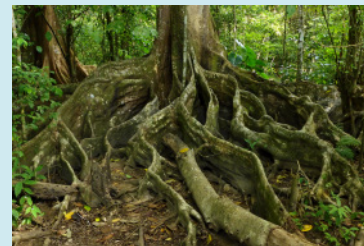
## Tropical rainforest



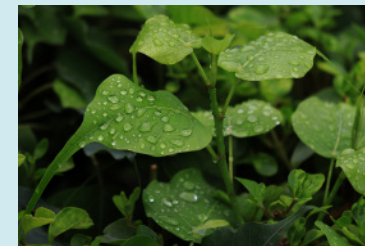
## How have plants adapted in the Amazon rainforest?



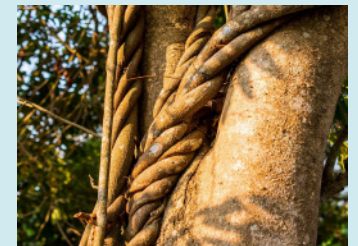
Thin, smooth bark ensures rain can run off trees easily.



Buttress roots keep tall trees stable in the wet soil and strong winds.



Drip tips mean rain can run off leaves without damaging them.



Lianas (vines) wind their way up other plants to reach sunlight.

## Map of the Amazon rainforest



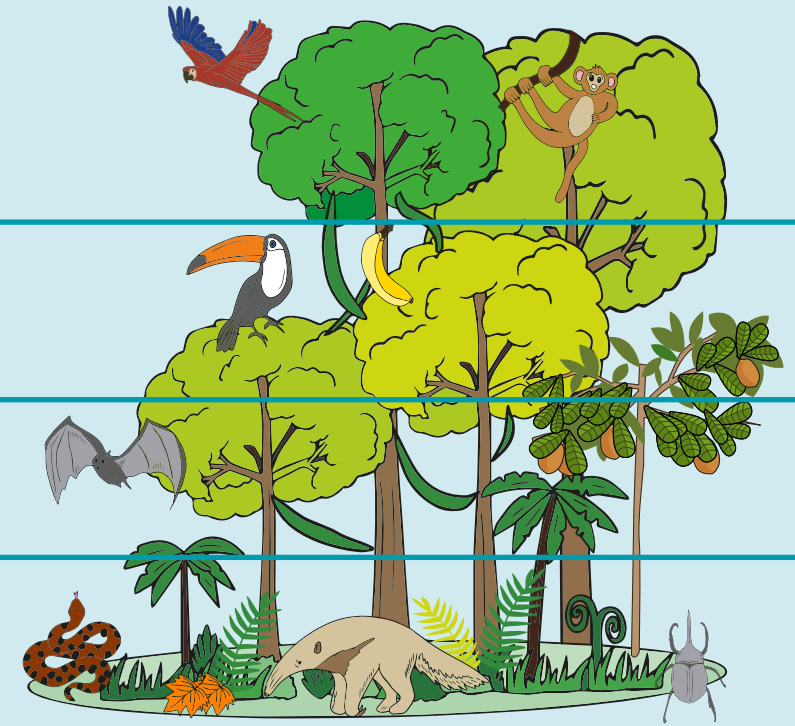
## Layers of the rainforest

emergent layer

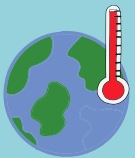
canopy layer

understorey layer

forest floor



### global warming



When our Earth's temperature rises because of greenhouse gases.

### mining



The process of digging up valuable minerals from the Earth's crust.

### logging



The cutting down of trees for their wood.

### deforestation



The cutting down of trees in a large area.

emergent layer

The top layer of the rainforest with the tallest trees that get lots of sunlight, rain and wind.

canopy layer

The layer of overlapping branches and leaves below the top of the rainforest that gets sunlight, rain and wind.

understorey layer

The warm and damp layer above the forest floor that gets little light.

forest floor

The ground layer of the rainforest where it is dark, wet and hot.